

Chart Treasure Hunt

Airspace Questions

1. What class of airspace is letter S at ground level? How high does it go?
2. What are the required cloud clearances and visibility requirements in letter S at ground level?
3. What class of airspace is above it? How high does it go?
4. What class of airspace is letter F at ground level? How high does it go?
5. What class of airspace is above it? How high does it go?
6. What class of airspace is letter J at ground level? How high does it go?
7. What are the required cloud clearances and visibility requirements in letter J at ground level?
8. What class of airspace is above it? How high does it go?
9. What class of airspace is letter I at ground level? How high does it go?
10. What are the required cloud clearances and visibility requirements?

11. What class of airspace is Letter A at ground level? How high does it go?
12. What are the required cloud clearances and visibility requirements in letter A at ground level?
13. What airspace is above it? How high does it go?
14. What class of airspace is letter B at 3,000? How low does it go? What class of airspace is below it? What class of airspace is above it?
15. What class of airspace is letter CC at ground level? How high does it go? What are the required cloud clearances and visibility requirements?
16. What class of airspace is letter BB at 5000' MSL?
17. What class of airspace is BB at 12,000 feet? What are the required cloud clearances and visibility requirements up there?

Chart Questions

18. What does the symbol at letter G mean? How high does the object go?



19. What does the symbol at letter H mean? How high does the object go?



20. What does the symbol at letter M mean?



21. What does the symbol at letter N mean?



22. What does the symbol at letter D mean?



23. What does the symbol at letter K mean?



24. What does the flag symbol at letter T mean?



25. What does the symbol at letter Z mean?



26. What does the symbol at letter AA mean?



27. What does the symbol at letter X mean?



28. What does the symbol at letter EE mean?



29. What does the symbol at letter FF mean?



30. What does the symbol at letter P mean?



31. What does the parachute symbol at letter Q mean?



32. What does the symbol at letter R mean?



33. What does the symbol at letter O mean?



34. What does the symbol at letter E mean?



35. What is the name of the navigational aid at letter E? What is the frequency?



36. Brighton airport (letter U) has a circular symbol, but Livingston Co Hardy airport (letter L) has brackets coming out the sides and a star on top. What do the brackets mean? What does the star mean?



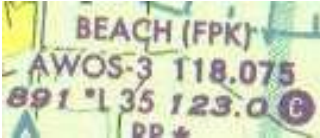
37. The symbol for Livingston Co Hardy airport (letter L) is magenta, while the symbol for Ann Arbor airport (letter W) is blue. What do the different colors mean?



38. The symbol for the Ann Arbor airport (letter W) shows the runways enclosed in a circle (with brackets and a star). The symbol for the airport at Willow Run (letter DD) shows the runways without a circle around them. Why are the runways depicted differently?



39. What is the elevation at Beach airport (letter C)?



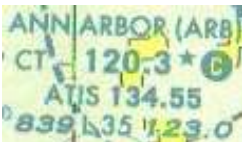
40. What is the Common Traffic Advisory Frequency at Beach airport (letter C)?

41. What is the length of the longest runway at Beach airport (letter C)?

42. Is there lighting available at nighttime at Beach airport (letter C)?

43. What do the letters "RP" mean at Beach airport (letter C)?

44. What is the elevation at Ann Arbor airport (letter W)?



45. What is the control tower frequency at Ann Arbor airport (letter W)?

46. What is the Common Traffic Advisory Frequency at Ann Arbor airport (letter W)?

47. What does the asterisk mean after the number 120.3 at Ann Arbor airport (letter W)?

48. What is the location identifier for Cackleberry airport (letter V)?



49. What is the length of the longest runway at Cackleberry airport (letter V)?

50. Letter Y is pointing to a circular magenta line. What does this line mean?

